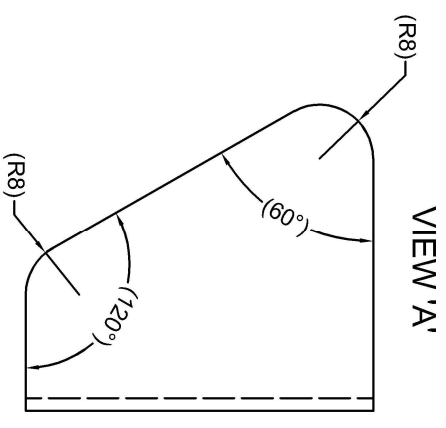
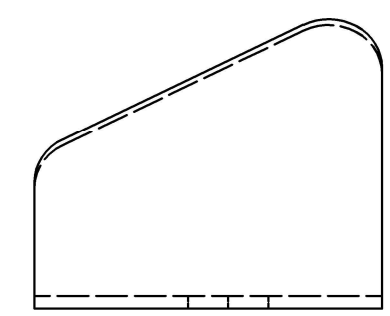
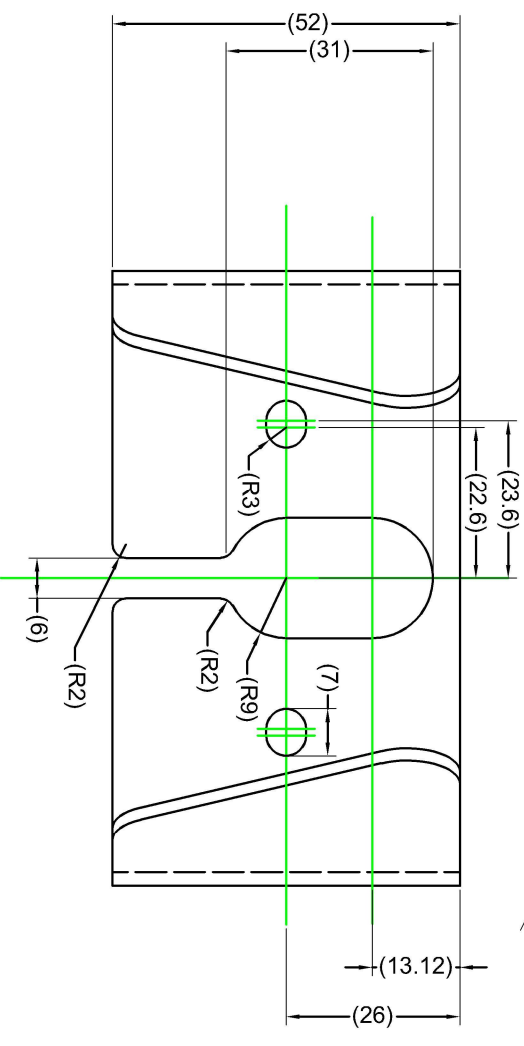
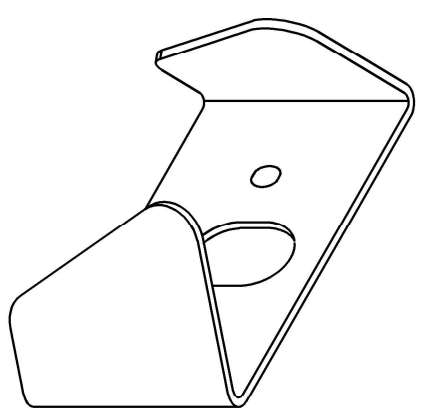
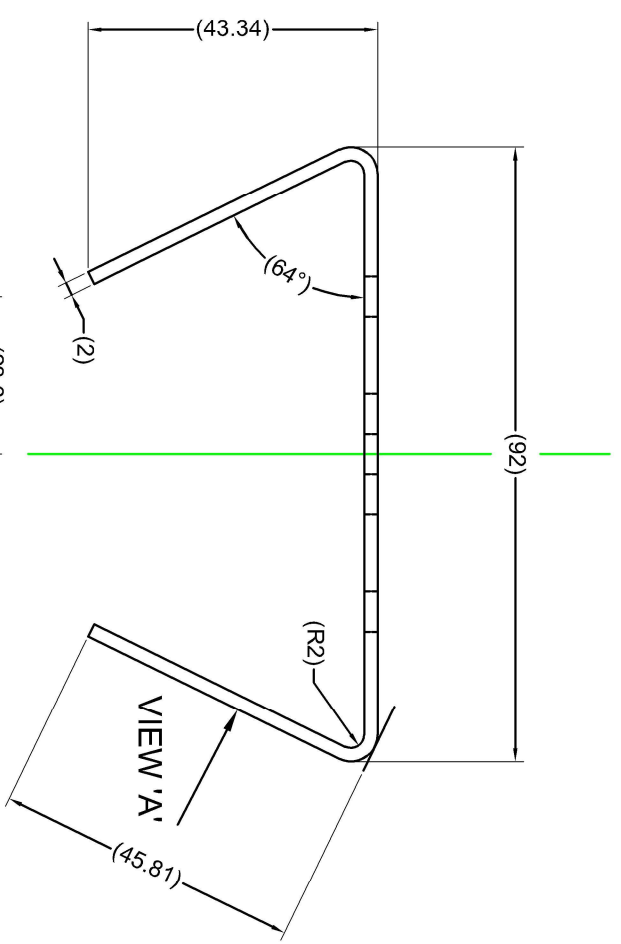


Revision Notes:			
RT -	Drawn:-	Checked:-	Approved:-
APAs -			Date: -



- NOTES:
1. FINISH: NATURAL
 2. MATERIAL: 2MM THICK 4003 STAINLESS STEEL
 3. EDGES TO BE DE-BURRED.
 4. SPRING WASHERS ARE RECOMMENDED WHEN MOUNTING THE CAMERA TO THE BRACKET TO ENSURE A SECURE FIT.

PROPRIETARY NOTICE
 THIS DESIGN AND TECHNICAL INFORMATION APPEARING ON THIS DRAWING IS THE PROPERTY OF BRIGADE ELECTRONICS, AND IS DISCLOSED IN CONFIDENCE. IT IS NOT TO BE COPIED, REPRODUCED, REVEALED TO OR EXPLOITED BY OTHERS, EITHER IN WHOLE OR IN PART WITHOUT THE EXPRESS WRITTEN CONSENT OF BRIGADE ELECTRONICS.

BRIGADE
 www.brigade-electronics.com

Assembly PI Approval SCROXALL	Approved by L.PILLAY	Checked by SLAVER	Drawn by S.GOVENDER
Angle of Projection	Units mm	Scale N/A	Released 18/12/19
Third Angle	Status RELEASED	Part No 4743A	Assembly Ref BN360-100C-BKT03
			BE-004246-00-19

